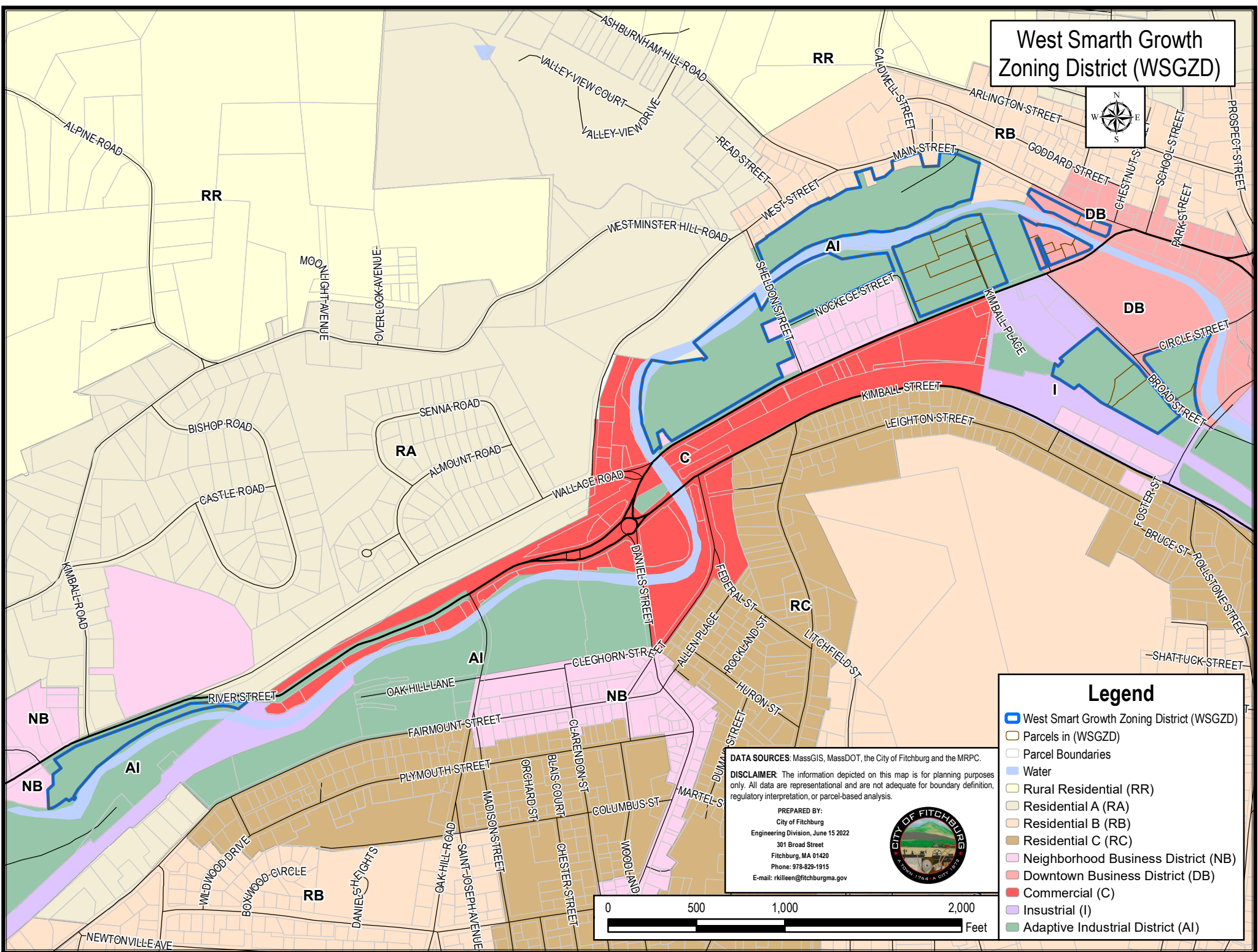


West Smart Growth Zoning District (WSGZD)



Legend

- West Smart Growth Zoning District (WSGZD)
- Parcels in (WSGZD)
- Parcel Boundaries
- Water
- Rural Residential (RR)
- Residential A (RA)
- Residential B (RB)
- Residential C (RC)
- Neighborhood Business District (NB)
- Downtown Business District (DB)
- Commercial (C)
- Industrial (I)
- Adaptive Industrial District (AI)

DATA SOURCES: MassGIS, MassDOT, the City of Fitchburg and the MRPC.

DISCLAIMER: The information depicted on this map is for planning purposes only. All data are representational and are not adequate for boundary definition, regulatory interpretation, or parcel-based analysis.

PREPARED BY:
 City of Fitchburg
 Engineering Division, June 15 2022
 301 Broad Street
 Fitchburg, MA 01420
 Phone: 978-829-1915
 E-mail: rkileen@fitchburgma.gov

