



CITY OF FITCHBURG - MASSWILDLIFE  
NORTHERN DRINKING WATER SUPPLY WATERSHED  
CONSERVATION RESTRICTION



## ***Rules and Regulations***

October 23, 2009

### **Summary:**

In June 2009, the Massachusetts Department of Fish and Game, Division of Fisheries and Wildlife (DFW) purchased a conservation restriction (CR) from the City of Fitchburg to assure permanent protection of its northern drinking water supply watershed.

The CR permanently protects the property's important wildlife habitat resources and provides quality non-motorized outdoor recreational opportunities for the general public while maintaining a safe and reliable drinking water resource for the City. The City continues to own and manage the property consistent with these goals and in consultation with DFW.

### **Public Access:**

The City of Fitchburg's northern drinking water supply watershed is open to non-motorized outdoor recreational activities such as hiking, nature study, snowshoeing, cross-country skiing, hunting, fishing, wildlife observation, mountain biking, horseback riding, orienteering, and similar uses. The City and DFW encourage the general public to enjoy this resource respectfully, keeping in mind that this land provides the drinking water for the City of Fitchburg. To protect this drinking water supply, and to respect others' use and enjoyment of this property, please follow these simple rules and regulations:

#### **General Rules:**

- ★ Keep yourself and your pets (including dogs and horses) out of and off of all reservoirs and streams. No swimming, wading, boating, canoeing, kayaking, ice skating or other in-water or on-water activities are allowed.
- ★ Keep away from and off of all dams, levies, spillways, water tanks and other water control and delivery structures, and respect all other areas posted to trespass by mutual agreement of DFW and the City.
- ★ No motorized vehicles of any kind, including all-terrain or off-road vehicles, snowmobiles, dirt bikes, etc.
- ★ No parking in front of gates.
- ★ No dumping of any kind. Please take with you everything you bring.
- ★ No vandalism, tampering with, or defacing any sign, building, or structure.
- ★ No removal, disturbance, or destruction of vegetation, soil or stones.
- ★ No removal, disturbance, or destruction of archaeological resources.
- ★ No camping or fires without written permission from the Water Department Superintendent.
- ★ No alcoholic beverages.

#### **Fishing Rules:**

- ★ Follow all Massachusetts laws and regulations governing fishing. See the annual printing of the *Massachusetts Hunting and Fishing Abstracts*, or visit [www.masswildlife.org](http://www.masswildlife.org) for more information.
- ★ No ice fishing.
- ★ No fishing in Lovell Reservoir.
- ★ Shoreline fishing only in Scott Reservoir and Fitchburg Reservoir.
- ★ No lead fishing gear less than one ounce (1 oz.) in size.

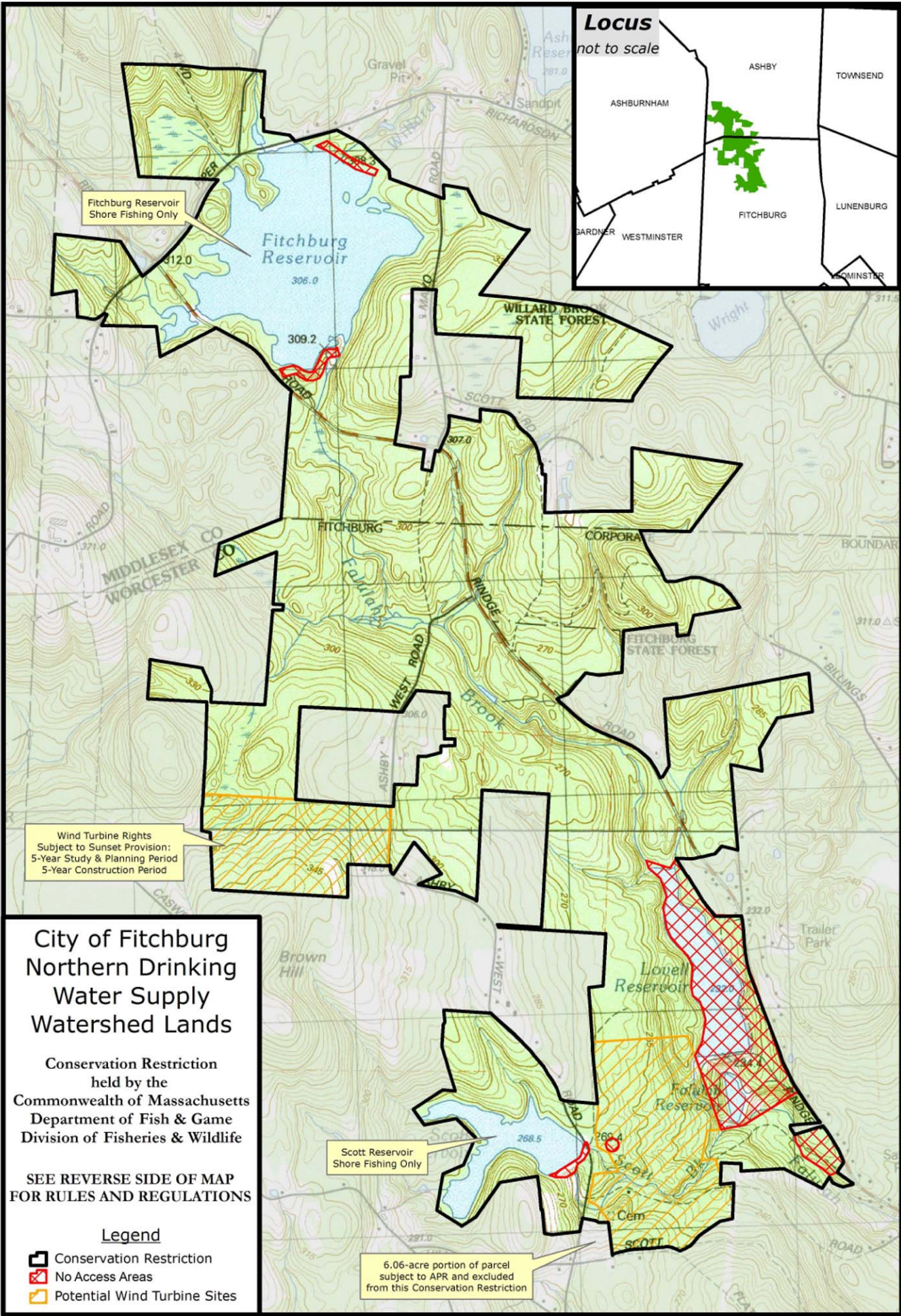
#### **Hunting and Trapping Rules:**

- ★ Follow all Massachusetts laws and regulations governing hunting and trapping. See the annual printing of the *Massachusetts Hunting and Fishing Abstracts*, or visit [www.masswildlife.org](http://www.masswildlife.org) for more information.
- ★ No on-water, in-water, or over-water hunting. Hunting dogs shall be kept from entering reservoirs and streams.
- ★ No target practicing.
- ★ The City of Fitchburg's northern drinking water supply watershed is NOT a pheasant or quail stocked area, and is not subject to the rules governing such areas.

The City of Fitchburg and DFW reserve the right to revise or amend these rules by mutual agreement as needed. The City of Fitchburg may pass ordinances in keeping with these rules and regulations, and may impose civil penalties associated with the violation of said rules including but not limited to the imposition of fines or banning of certain repeat violators from the property. The City, DFW, and other law enforcement entities may enforce these rules independently of one another as needed.

The City may, upon notice to DFW, temporarily interrupt public access when credible evidence from a reliable federal, state, local or international law enforcement or security agency that continued public access poses a clear and present danger to the public health, safety, or a potential hazard to the drinking water supply. The suspension of public access shall last only as long as is necessary to immediately protect public health and safety of the water supply and for a reasonable time thereafter.

DFW may, upon notice to the City, temporarily interrupt public access when credible evidence from a reliable federal, state, local or other qualified conservation agency or organization that continued public access poses a clear and present threat to sensitive habitats or species. The suspension of public access shall last only as long as is necessary to immediately protect the habitat or species and for a reasonable time thereafter.



# City of Fitchburg Northern Drinking Water Supply Watershed Lands

Conservation Restriction  
held by the  
Commonwealth of Massachusetts  
Department of Fish & Game  
Division of Fisheries & Wildlife

SEE REVERSE SIDE OF MAP  
FOR RULES AND REGULATIONS

### Legend

- Conservation Restriction
- No Access Areas
- Potential Wind Turbine Sites



Department of Fish & Game  
Division of Fisheries & Wildlife  
Map Produced by Brandon Kibbe  
Central District Land Agent

Governor Deval L. Patrick  
Secretary of Environmental Affairs Ian A. Bowles  
Commissioner Mary B. Griffin

